



Asset Management & Brokerage

**Bluffcreek Towers Suite 380**



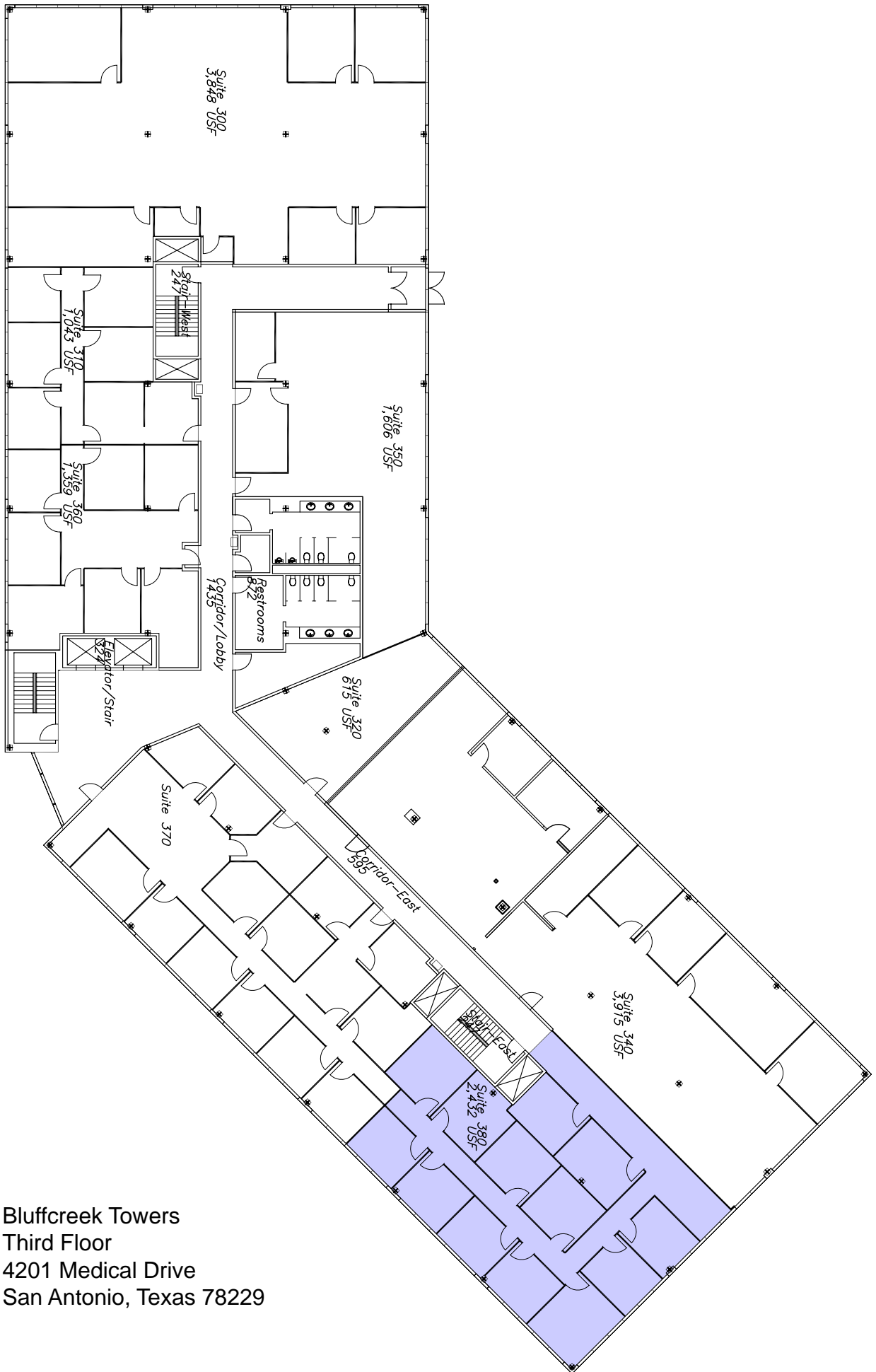
**Bluffcreek Towers Suite 380  
4201 Medical Drive  
San Antonio, Texas 78229**

Third floor space with multiple offices.

<b>LESSOR:</b>	Glenn Jackson
<b>SQUARE FOOTAGE:</b>	2,432 usable    2,811 rentable 15.6 % Add On Factor
<b>ADDRESS (PREMISES):</b>	4201 Medical Drive San Antonio, Texas 78229
<b>AVAILABILITY DATE:</b>	Now
<b>TERM (MOS.):</b>	Negotiable
<b>BASE RENT:</b>	\$15.75 per Rentable Square Foot
<b>DESIGN/FINISH OUT</b>	Negotiable
<b>PARKING RATIO:</b>	4:100 with No Charge
<b>EXPENSE STOP:</b>	Base Year
<b>SECURITY DEPOSIT:</b>	Negotiable
<b>BROKER(S):</b>	4% Cash Out
<b>SPECIAL</b>	
<b>GENERAL INFORMATION:</b>	Four Story Glass Building
<b>CONTACT:</b>	PF Properties Richard Simonite    210-394-5007 Fax: 210-824-3038

**Information Subject to Change Without Notice**

P.O. Box 201687    Austin, Texas 78720-1687    (512) 343-6990



Bluffcreek Towers  
 Third Floor  
 4201 Medical Drive  
 San Antonio, Texas 78229